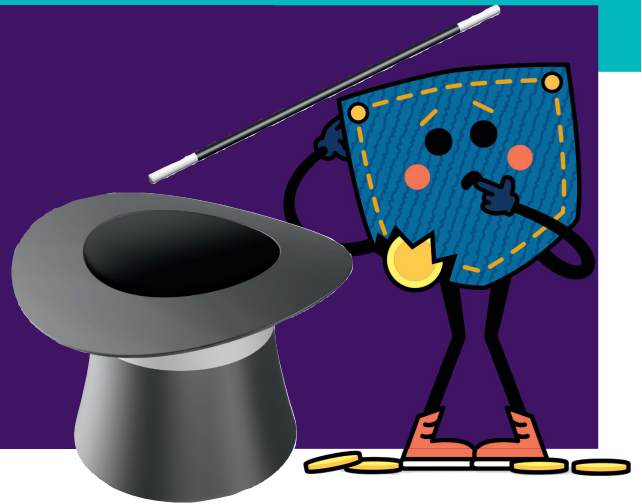


Name: \_\_\_\_\_

# Magic coin

## Activity sheet

Make a coin seem to leave an envelope and go straight through a plate into a glass with this dazzling magic trick!

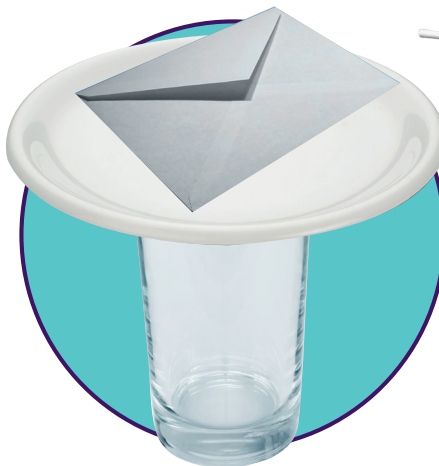


### What the audience sees

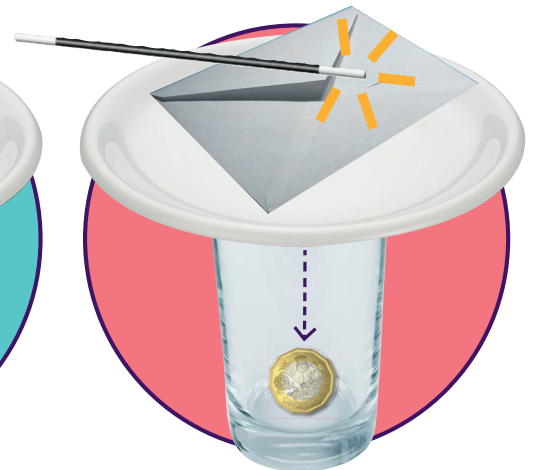
Put a coin in a small envelope.



Put the envelope on a plate on top of an empty glass.



Tap the plate with your magic wand and the coin goes into the glass!



### How it works

1. Before the audience arrives, stick a second coin to the bottom of the plate with damp soap.
2. Pretend to put the coin into the envelope, but secretly drop it in your lap instead.
3. When you tap the plate with the wand it will knock the coin from the bottom of the plate into the glass.



Hey Presto!

### Top tip

Put your money away safely in your money box after the trick.

